

L30H5L Technical Data Sheet

Compressor model **L30H5L**
 Voltage **110-120V 60Hz ~1**
 Refrigerant **R134a**

APPLICATION

Application Low Back Pressure
 Refrigerant R134a
 Evaporating Temp. -35,0 °C to -15,0 °C
 Expansion Capillar
 Comp. Cooling Static
 Max. ambient temp. 43,0 °C
 Compatible refriger. R1234yf

COMPRESSOR

Displacement 3,10 cm³
 Diameter 17,20 mm
 Stroke 6,70 mm
 Net Weight 3,85 Kg
 Oil type ISO VG 15 ESTER
 Oil charge 95 cm³

MOTOR

Nominal Power 1/12 hp
 Voltage/Frequency 110-120V 60Hz
 Voltage range 94-127 V
 Type RSIR
 Phase number 1 PH
 Locked Rotor Amps (LRA) 5,70 A
 Max. Cont. Current (MCC) 1,60 A
 Main W. resist. at 25°C 10,30 Q
 Start W. resist. at 25°C 15,20 Q

NOMINAL PERFORMANCE

	ASHRAE	CECOMAF
Cooling Capacity	67 kCal/h	57 W
COP	0,96 W/W	0,74 W/W
EER	0,82 kCal/Wh	0,64 kCal/Wh
Input Power	82 W	77 W
Current	1,20 A	1,18 A

TEST CYCLE CONDITIONS

	ASHRAE LBP (B)	CECOMAF LBP (A)
Evaporating temp. (T _e)	-23,3 °C	-25,0 °C
Condensing temp. (T _c)	55,0 °C	55,0 °C
Liquid temp. (T _{liq.})	32,0 °C	55,0 °C
Ambient temp. (T _{amb.})	32,0 °C	32,0 °C
Suction temp. (T _{suction})	32,0 °C	32,0 °C
Voltage/Frequency	115 V 60 Hz	115 V 60 Hz

ELECTRICAL COMPONENTS

	Option 1	Option 2		
Relay				
Reference	QP2-4.7 (010)	QP2-4R7 (010)		
Voltage	V	V		
Resistance	Q	Q		
Protector				
Reference	DRB19P61A1 (068)	BT52-125A61D2 (068)		
Current				
Time check				
Disc temp. (Open/Close)				

L30H5L Technical Data Sheet



ASHRAE

Tc °C	Te °C	Cooling Capacity kCal/h	Consumption W	Current A	COP W/W	EER kCal/Wh
40	-35	41	61	1,13	0,79	0,68
40	-30	56	67	1,15	0,98	0,84
40	-25	75	76	1,17	1,16	1,00
40	-23,3	83	79	1,19	1,22	1,05
40	-20	99	87	1,22	1,32	1,14
40	-15	127	101	1,30	1,47	1,26
40	-10	159	117	1,43	1,58	1,36

45	-35	37	59	1,13	0,73	0,62
45	-30	51	66	1,14	0,90	0,78
45	-25	70	76	1,18	1,07	0,92
45	-23,3	78	80	1,19	1,13	0,97
45	-20	94	89	1,23	1,23	1,06
45	-15	121	104	1,33	1,36	1,17
45	-10	153	121	1,47	1,47	1,26

50	-35	32	57	1,12	0,66	0,57
50	-30	47	66	1,14	0,83	0,71
50	-25	65	77	1,18	0,99	0,85
50	-23,3	73	81	1,20	1,04	0,90
50	-20	88	90	1,24	1,14	0,98
50	-15	116	107	1,35	1,26	1,08
50	-10	147	126	1,51	1,36	1,17

55	-35	28	55	1,12	0,58	0,50
55	-30	42	65	1,14	0,75	0,64
55	-25	60	77	1,18	0,91	0,78
55	-23,3	67	82	1,20	0,96	0,82
55	-20	83	92	1,25	1,05	0,90
55	-15	110	110	1,37	1,17	1,00
55	-10	142	130	1,55	1,27	1,09

60	-35	23	53	1,12	0,51	0,43
60	-30	37	64	1,14	0,67	0,58
60	-25	55	78	1,18	0,82	0,71
60	-23,3	62	83	1,20	0,87	0,75
60	-20	78	94	1,26	0,96	0,83
60	-15	105	113	1,39	1,08	0,93
60	-10	136	134	1,59	1,18	1,01

65	-35	18	51	1,12	0,42	0,36
65	-30	32	63	1,14	0,59	0,51
65	-25	50	78	1,18	0,74	0,64
65	-23,3	57	84	1,21	0,79	0,68
65	-20	72	96	1,27	0,88	0,76
65	-15	99	116	1,42	0,99	0,85
65	-10	130	139	1,64	1,09	0,94

CECOMAF

Tc °C	Te °C	Cooling Capacity W	Consumption W	Current A	COP W/W	EER kCal/Wh
40	-35	45	61	1,13	0,74	0,64
40	-30	63	67	1,15	0,93	0,81
40	-25	84	76	1,17	1,11	0,96
40	-23,3	92	79	1,19	1,17	1,01
40	-20	110	87	1,22	1,26	1,09
40	-15	139	101	1,30	1,38	1,20
40	-10	173	117	1,43	1,48	1,28

45	-35	39	59	1,13	0,66	0,57
45	-30	55	66	1,14	0,83	0,72
45	-25	75	76	1,18	0,98	0,85
45	-23,3	83	80	1,19	1,03	0,89
45	-20	99	89	1,23	1,12	0,97
45	-15	127	104	1,33	1,23	1,06
45	-10	160	121	1,47	1,32	1,14

50	-35	32	57	1,12	0,57	0,49
50	-30	47	66	1,14	0,72	0,62
50	-25	66	77	1,18	0,86	0,74
50	-23,3	73	81	1,20	0,90	0,78
50	-20	89	90	1,24	0,98	0,85
50	-15	116	107	1,35	1,08	0,94
50	-10	147	126	1,51	1,17	1,01

55	-35	26	55	1,12	0,48	0,41
55	-30	39	65	1,14	0,61	0,53
55	-25	57	77	1,18	0,74	0,64
55	-23,3	64	82	1,20	0,78	0,67
55	-20	78	92	1,25	0,85	0,73
55	-15	104	110	1,37	0,95	0,82
55	-10	134	130	1,55	1,03	0,89

60	-35	20	53	1,12	0,37	0,32
60	-30	32	64	1,14	0,50	0,43
60	-25	48	78	1,18	0,61	0,53
60	-23,3	54	83	1,20	0,65	0,56
60	-20	68	94	1,26	0,72	0,62
60	-15	92	113	1,39	0,82	0,71
60	-10	120	134	1,59	0,90	0,77

65	-35	13	51	1,12	0,26	0,23
65	-30	24	63	1,14	0,38	0,33
65	-25	39	78	1,18	0,49	0,43
65	-23,3	45	84	1,21	0,53	0,46
65	-20	57	96	1,27	0,60	0,52
65	-15	80	116	1,42	0,69	0,60
65	-10	107	139	1,64	0,77	0,67

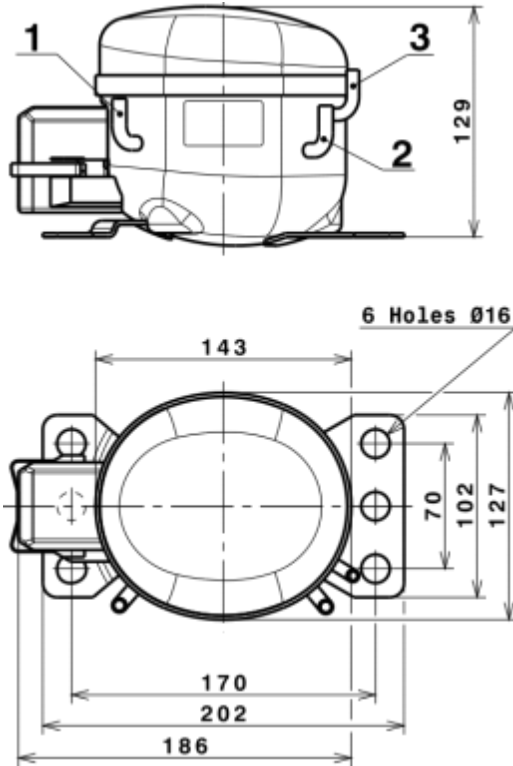
EN12900

X	Cooling Capacity (W)	Consumption (W)	Current (A)	Mass Flow (kg/h)
1	378,4093350404	105,3458838010	1,3785021930	6,862554145283
2	10,9066221452	2,6412832153	0,0350413639	0,21934268105342
3	-3,2417303292	1,4057678318	0,0123011289	-0,029817857313717
4	0,0801830274	0,0536773455	0,0008263440	0,0021622378632241
5	-0,0565369934	0,0518391135	0,0003735824	-0,00023529619865731

Equation	$x_1 + x_2Te + x_3Tc + x_4Te^2 + x_5TeTc$
----------	---

L30H5L Technical Data Sheet

COMPRESSOR DIMENSIONS

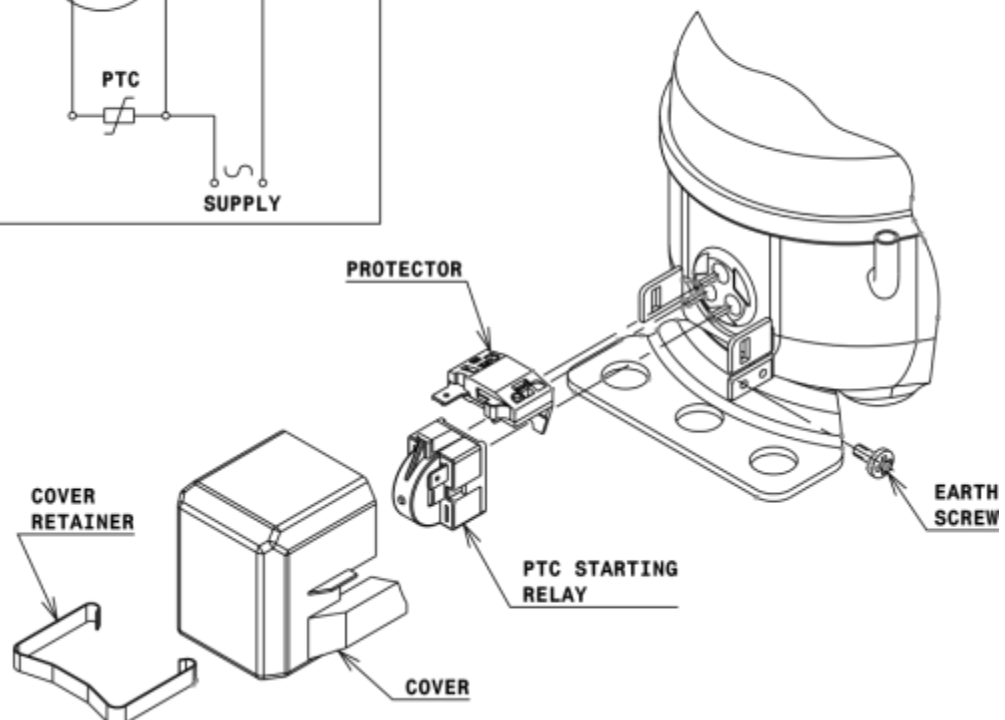
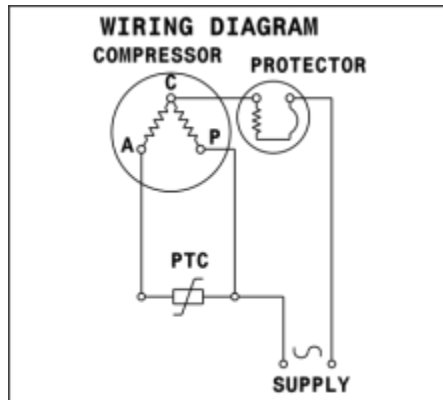


DESIGNATION INTERNAL DIAM.

DESIGNATION	INTERNAL DIAM.
1 Suction	6,1 mm
2 Service	6,1 mm
3 Discharge	5,1 mm

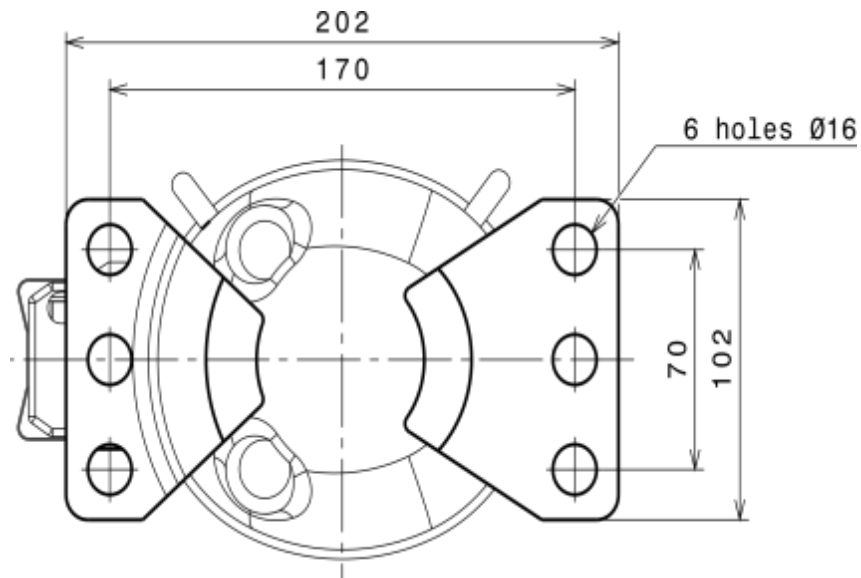
WIRING DIAGRAMS AND ELECTRICAL ASSEMBLY

RSIR CONNECTION (PTC) (B, Small L ranges)



L30H5L Technical Data Sheet

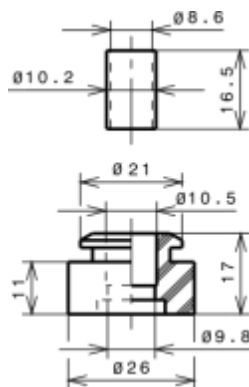
FIXINGS



SILENT BLOCKS (MOUNTING ACCESSORIES)

STANDARD

Ø16 holes (170x70 net)



SOA

SOA R134a LBP

